

SUMTER TOWNSHIP

Each township has six files containing six sections in each, and one file containing all 36 sections.

Sumter01to06.pdf
Sumter07to12.pdf
Sumter13to18.pdf
Sumter19to24.pdf
Sumter25to30.pdf
Sumter31to36.pdf
SumterAll36.pdf

The points are listed starting with the point above the SE corner and continuing in a counter-clockwise rotation around the section. This normally begins with the East point, Northeast, then North, but may also include Witness Corners, and/or Meander Corners.

Definitions

Witness Corner: A witness corner “stands in” when the true corner cannot be monumented or occupied because of difficult terrain or obstruction of the corner sight. The witness corner must be on the section line and is usually 5 or 10 chains away from the true corner.

Meander Corner: The intersection of a township, range, or section line and the banks of a navigable stream or meandering body of water.

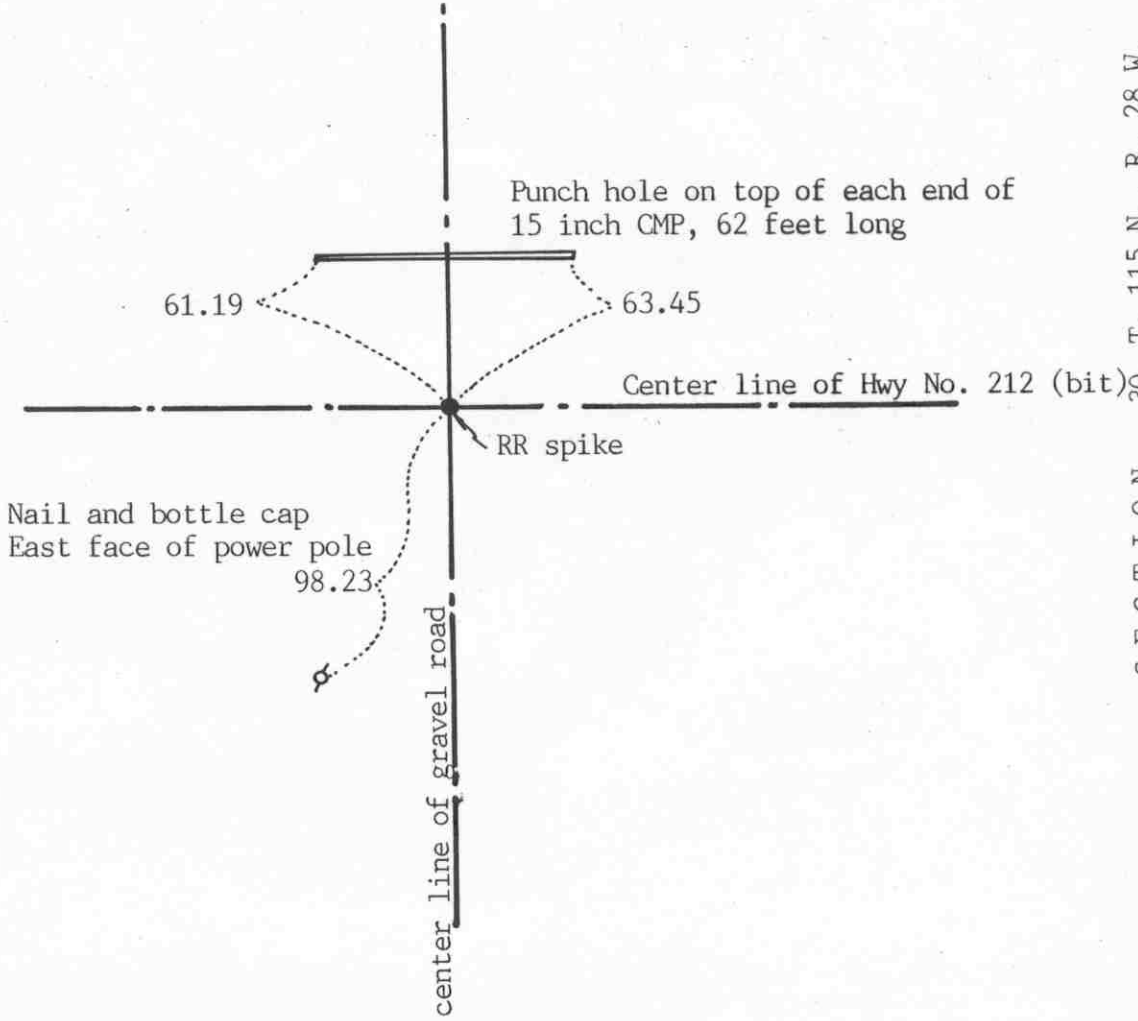
EAST QUARTER corner, Section 25, Township 115 North, Range 29 West

Certificate of Location of Government Corner

SKETCH OF REFERENCE TIES (NO SCALE)



SECTION 25
T. 115 N., R. 29 W.



SECTION 30, T. 115 N., R. 28 W.

Statement of evidence relative to this corner location on sheet 2

I hereby certify that this document was prepared by me or under my direct supervision.

Willard Pellinen

Willard Pellinen
McLeod County Surveyor
License No. 9626

Date June 9, 1991

OFFICE OF THE COUNTY RECORDER
MCLEOD COUNTY, MINNESOTA.

I hereby certify that this document was filed in this office at 9 o'clock A. M. on the 20th day of June, 1991.

Carmen Esthi, County Recorder

By Thyllis Jopkowiak, Deputy

Document No. 239528

Certificate of Location of Government Corner

1855. John Ryan of the General Land Office set a post and marked a bur oak for a bearing tree.

September 10, 1970. McCombs Knutson Associates found a railroad spike at the center line of Hwy 212 and center line of County Hwy No. 65.

November 23, 1971. McCombs Knutson Associates, Dickman Knutson, county surveyor, too reference ties to the railroad spike.

May 21, 1990. We found the railroad spike down 4 inches below the bituminous surface and took new reference ties.

NORTHEAST corner, Section 25, Township 115 North, Range 29 West

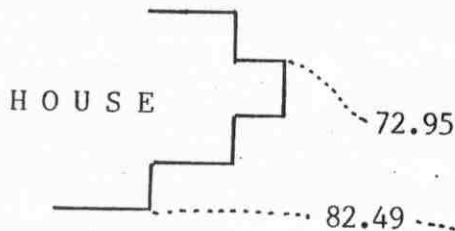
Certificate of Location of Government Corner

SKETCH OF REFERENCE TIES
(NO SCALE)



SECTION 24
T. 115 R. 29

SECTION 19
T. 115 R. 28



Ties are to corners of house foundation

cast iron monument

center line of gravel road

Nail and bottle cap
West face of power pole
90.75

49.70
Nail and bottle cap
Top of wood fence post

fence

SECTION 25
T. 115 R. 29

SECTION 30
T. 115 R. 28

Statement of evidence relative to this corner location on sheet 2

I hereby certify that this document was prepared by me or under my direct supervision.

Willard Pellinen

Willard Pellinen
McLeod County Surveyor
License No. 9626

Date July 25, 1994

OFFICE OF THE COUNTY RECORDER
MCLEOD COUNTY, MINNESOTA.

I hereby certify that this document was filed in this office at 9 o'clock A. M. on the 16th day of August, 1994.

Carmen Estelle Mulder, County Recorder

By _____, Deputy

Document No. 261295

Certificate of Location of Government Corner

July, 1855. John Ryan of the General Land Office first established this corner. He set a post and marked 2 butternut trees, a linden and an elm for bearing trees.

November 14, 1919. E. L. Higgins, surveyor, shows a pin at the corner.

1970. Dickman Knutson, county surveyor, dug a hole 15 feet by 8 feet wide and $4\frac{1}{2}$ feet deep at the location shown in old surveys using the old survey distances. John Tupa from Hutchinson dug, using a backhoe. They found no evidence of the government corner.

November 3, 1970. Knutson set a McLeod County cast iron monument on the center line of the north-south road using old survey distance from the center line of the railroad. (1894 feet to the new center line of the railroad).

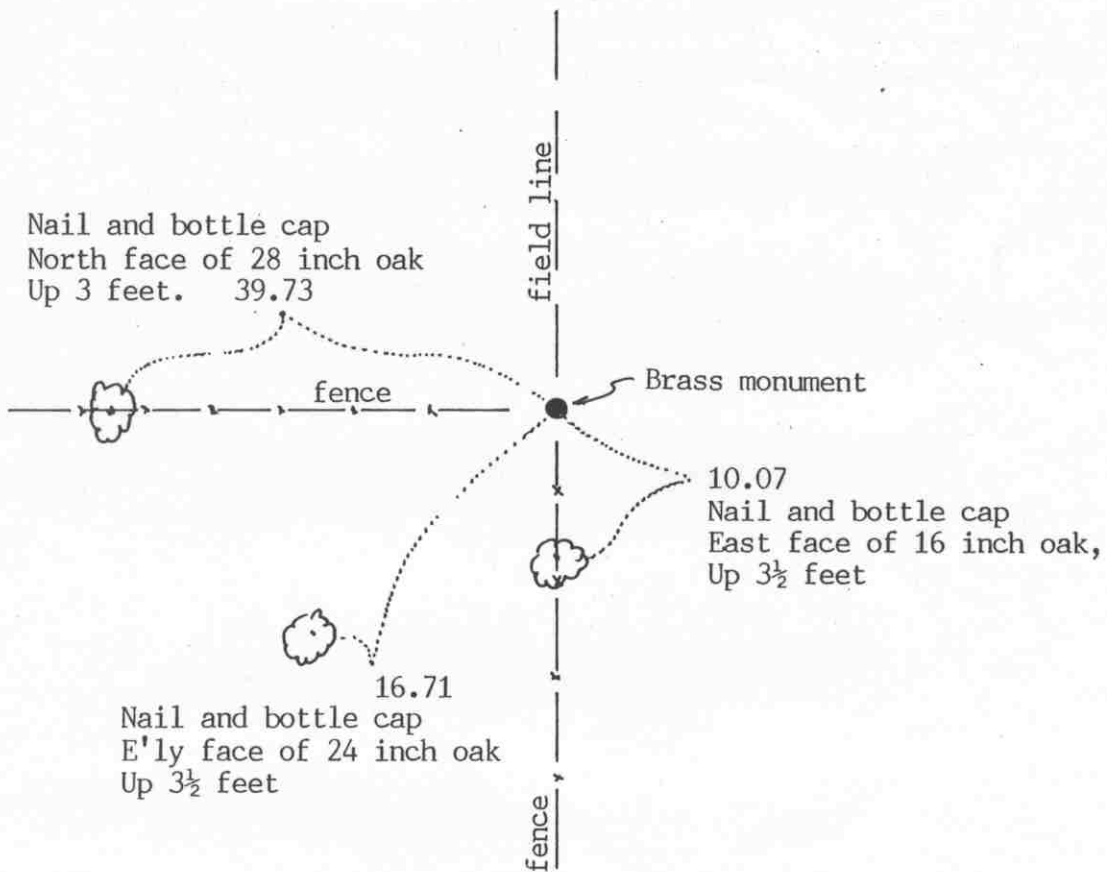
March 3, 1994. We found the monument in good condition down 10 inches below the surface of the gravel road and took new reference ties.

NORTH QUARTER corner, Section 25, Township 115 North, Range 29 West

Certificate of Location of Government Corner

SKETCH OF REFERENCE TIES
(NO SCALE)

SECTION 24



SECTION 25

Statement of evidence relative to this corner location on sheet 2

I hereby certify that this document was prepared by me or under my direct supervision.

Willard Pellinen
Willard Pellinen
McLeod County Surveyor
License No. 9626

Date Sept. 24, 1993

OFFICE OF THE COUNTY RECORDER
MCLEOD COUNTY, MINNESOTA.

I hereby certify that this document was filed in this office at 2 o'clock P.M. on the 5th day of Oct, 1993.

Carmen Estelle Mulder, County Recorder

By _____, Deputy

Document No. 255172

Certificate of Location of Government Corner

September, 1856. D. L. Langton of the General Land Office set a post and marked 2 oaks for bearing trees.

December 17, 1890. L. G. Simmons, surveyor, reset the corner from found bearing trees.

1926. Carlisle Madson, county surveyor, found the corner set by Simmons and replaced it with a pipe with a brass cap.

September, 1970. McCombs Knutson Associates, Dickman Knutson county surveyor, found the brass monument and took available reference ties.

September 17, 1993. We found the monument down 6 inches below the ground surface and checked the reference ties.

EAST QUARTER corner, Section 26, Township 115 North, Range 29 West

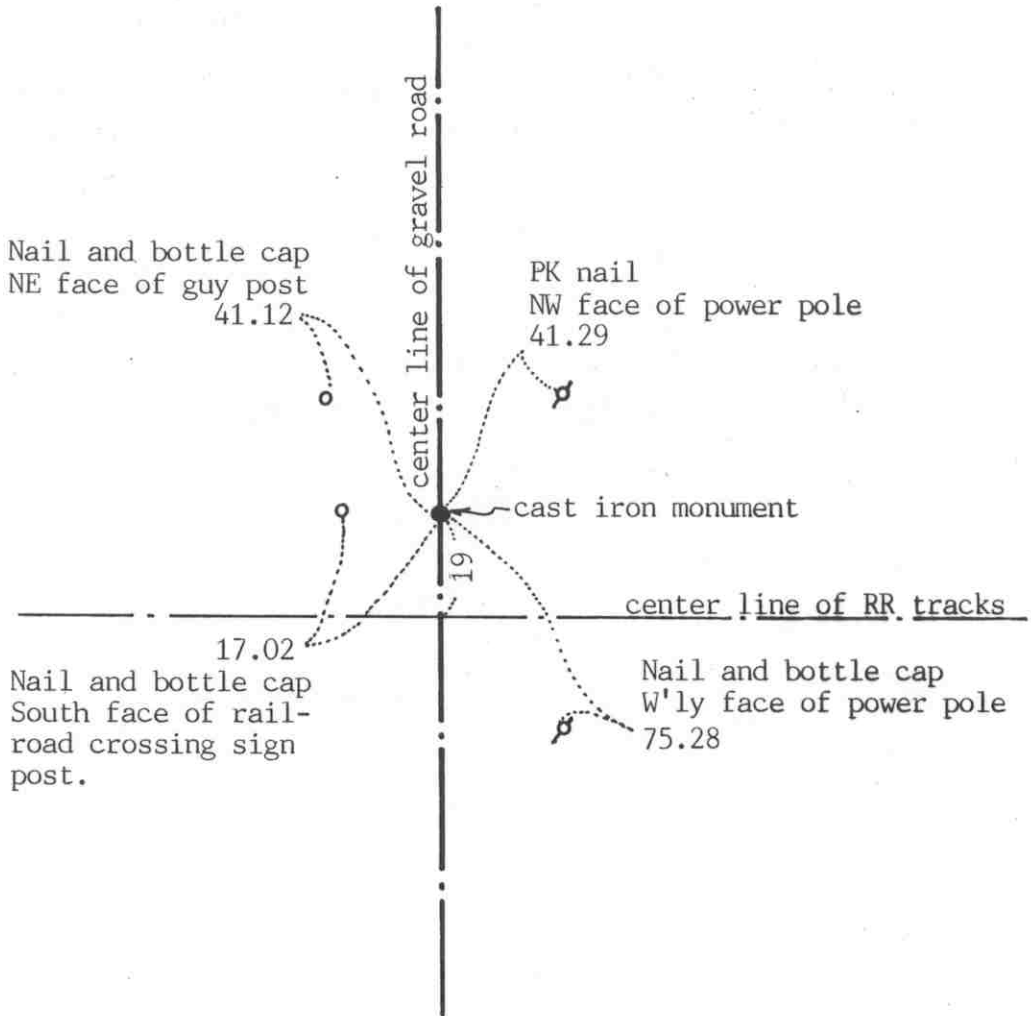
Certificate of Location of Government Corner

SKETCH OF REFERENCE TIES (NO SCALE)



SECTION 26

SECTION 25



Statement of evidence relative to this corner location on sheet 2

I hereby certify that this document was prepared by me or under my direct supervision.

Willard Pellinen

Willard Pellinen
McLeod County Surveyor
License No. 9626

Date June 9, 1991

OFFICE OF THE COUNTY RECORDER
MCLEOD COUNTY, MINNESOTA.

I hereby certify that this document was filed in this office at 9 o'clock A. M. on the 20th day of June, 1991.

Carmen Ostlie, County Recorder

By Phyllis Jopkowiak, Deputy

Document No. 239529

Certificate of Location of Government Corner

September, 1856. This corner was originally established by D. L. Langton of the General Land Office. He set a post (in a marsh), raised mound of earth, drove charred stake and dug pits 10 links north and south.

April 5, 1976. McCombs Knutson Associates (Dickman Knutson, county surveyor) measured the east line of Section 26 and set a temporary east quarter corner 18 feet north of the center line of the railroad. Highway No. 212 right of way plans show the corner to be north of the railroad. (scaled 18 feet)

August 26, 1976. Knutson dug for the corner, John Tupa from Hutchinson with a backhoe. Down $7\frac{1}{2}$ feet below the road surface they found a 4 inch by 8 inch stone, set on end, with a rotted wood stake beside it. They took available reference ties.

September 14, 1976. Knutson set a spike at the corner and took additional reference ties.

September 27, 1976. Knutson replaced the spike with a McLeod County cast iron monument.

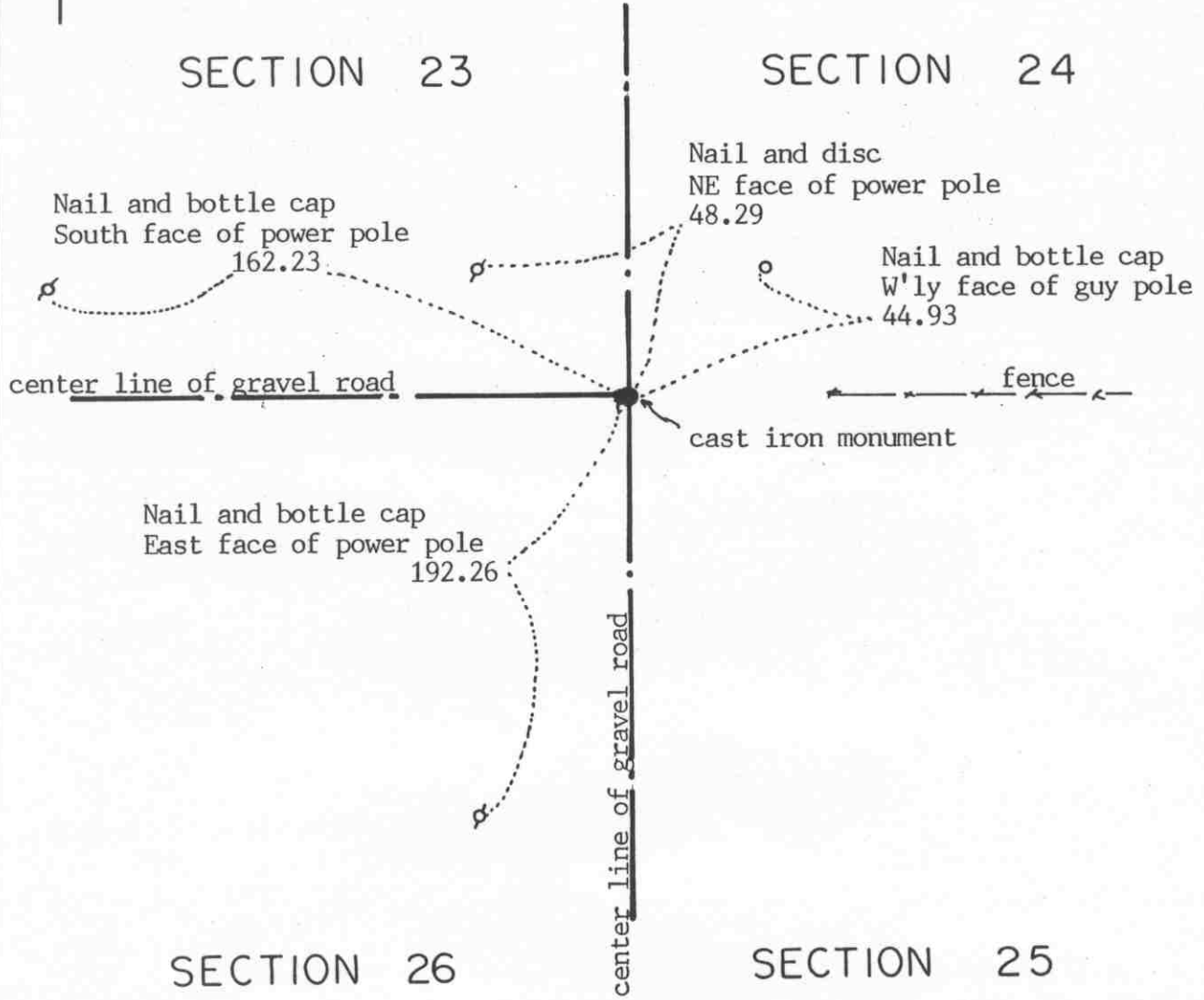
May 21, 1990. We found the monument in good condition, 8 inches below the road surface. All the old reference ties had been destroyed so we took new ties.

We accept the stone and wood stake found by Knutson as having perpetuated the correct location of the quarter corner.

NORTHEAST corner, Section 26, Township 115 North, Range 29 West

Certificate of Location of Government Corner

SKETCH OF REFERENCE TIES (NO SCALE)



Statement of evidence relative to this corner location on sheet 2

I hereby certify that this document was prepared by me or under my direct supervision.

Willard Pellinen
Willard Pellinen
McLeod County Surveyor
License No. 9626

Date July 22, 1993

OFFICE OF THE COUNTY RECORDER
MCLEOD COUNTY, MINNESOTA.

I hereby certify that this document was filed in this office at 4 o'clock P.M. on the 27th day of July, 1993.

Carmen Estelle Muder, County Recorder

By _____, Deputy

Document No. 253818

NORTHEAST _____ corner, Section 26, Township 115 North, Range 29 West

Certificate of Location of Government Corner

September, 1856. Denis Langton of the General Land Office established this corner. He set a post, raised a mound of earth, drove a charred stake and planted locust seeds at the corners of the mound.

1926.. Carlisle Madson, Sr. set an iron monument at the corner.

March 3, 1976. We dug and found a 3½ inch iron monument down 2 feet at the center-line - center line of the roads and in line with a fence to the east. We took reference ties and set a McLeod County cast iron monument over the found monument.

We accept the monument set by Madson as marking the correct location of the section corner. It fits long standing occupation lines, the center lines of the roads and the fence to the east.

April 2, 1993. We found the cast iron monument down 3 inches below the road surface and took new reference ties.

Certificate of Location of Government Corner

SKETCH OF REFERENCE TIES

(NO SCALE)

SECTION 23

Nail and disc

S'ly side of power pole

77.77

Punch hole on top of
each end of CMP

28.35

center line of gravel road

cast iron monument

73.78

Nail and disc

East face of 26 inch ash

fence

SECTION 26

Statement of evidence relative to this corner location on sheet 2

I hereby certify that this document was prepared by me or under my direct supervision.

Willard Pellinen

Willard Pellinen
McLeod County Surveyor
License No. 9626

Date July 23, 1993

OFFICE OF THE COUNTY RECORDER
MCLEOD COUNTY, MINNESOTA.

I hereby certify that this document was filed in this office at 4 o'clock P.M. on the 5th day of August, 1993.

Carmen Estlie Mulder, County Recorder

By _____, Deputy

Document No. 254001

Certificate of Location of Government Corner

September, 1856. Denis Langton of the General Land Office established this corner. He set a post, raised a mound of earth, drove a charred stake and planted locust seeds in the mound.

August 26, 1976. McCombs Knutson Associates (Dickman Knutson, county surveyor) excavated for the corner, John Tupa from Hutchinson with a backhoe. Down $1\frac{1}{2}$ feet below the road surface they found a 6 inch by 6 inch limestone. This was on the center line of the east-west road in line with a fence to the south. They dug deeper but found nothing else.

September 28, 1976. Knutson set a McLeod County cast iron monument and took additional reference ties.

April 2, 1993. We found the monument in good condition and checked the reference ties.

The monument set by Knutson is accepted as marking the correct location of the quarter corner. It fit long standing occupation line, the road and the fence, and it perpetuates the location of an older monument, the stone.

EAST QUARTER corner, Section 27, Township 115 North, Range 29 West

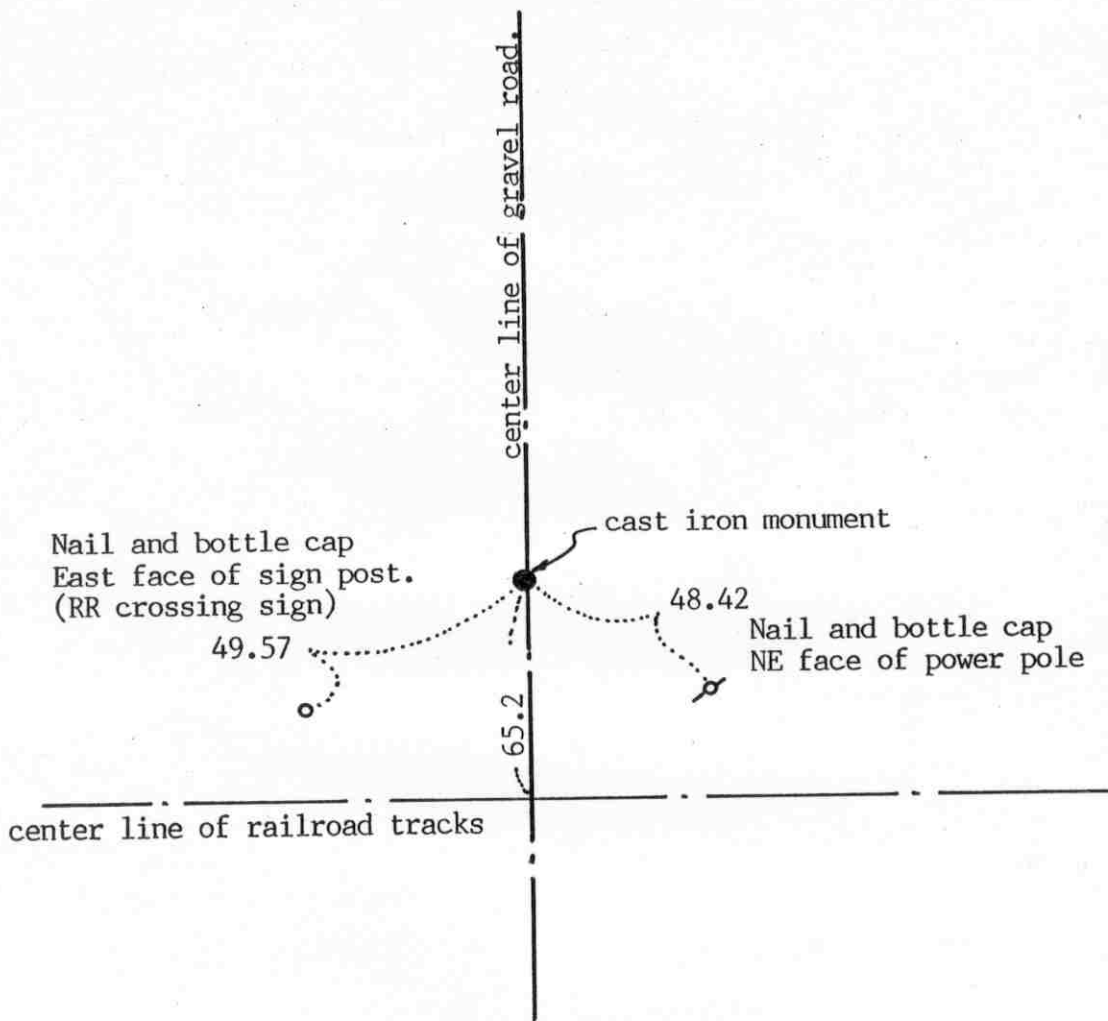
Certificate of Location of Government Corner

SKETCH OF REFERENCE TIES

(NO SCALE)

SECTION 27

SECTION 26



Statement of evidence relative to this corner location on sheet 2

I hereby certify that this document was prepared by me or under my direct supervision.

Willard Pellinen

Willard Pellinen
McLeod County Surveyor
License No. 9626

Date June 29, 1994.

OFFICE OF THE COUNTY RECORDER
MCLEOD COUNTY, MINNESOTA.

I hereby certify that this document was filed in this office at 9 o'clock A. M. on the 26th day of July, 1994.

GARMEN OSTLIE MULD-R, MCLEOD COUNTY RECORDER, County Recorder
By Phyllis Sopkowiak, Deputy
Document No. 260931

EAST QUARTER corner, Section 27, Township 115 North, Range 29 West

Certificate of Location of Government Corner

September, 1856. Denis L. Langton of the General Land Office established this corner. He set a post in a mound of earth, in a marsh.

Highway 212 right of way map scales 65 feet \pm from the center line to the quarter corner. (From R.R. center line)
The railroad right of way map scales 50 to 75 feet from the center line to the quarter corner.

August 26, 1976. Dickman Knutson, county surveyor, dug for the corner, John Tupa from Huthcinson, with a backhoe. They dug a hole 25 feet long, from 50 feet north of the center line of the tracks to 75 feet north. At approximately 65 feet north, down $2\frac{1}{2}$ feet below the road surface they found a 15 inch diameter stone with a wood stake beside the stone.

September 28, 1976. Knutson set a McLeod County cast iron monument over the found stone and took reference ties.

March 3, 1994. We found the monument in good condition and took new ties.

NORTHEAST corner, Section 27, Township 115 North, Range 29 West

Certificate of Location of Government Corner

SKETCH OF REFERENCE TIES
(NO SCALE)



SECTION 22

SECTION 23

Nail and bottle cap
South face of power pole
128.16

Nail and bottle cap
NW face of power pole
53.03

Center line of gravel road

cast iron monument

47.22
Nail and bottle cap
NE face of post by tel.
pedestal

center line of gravel road

SECTION 27

SECTION 26

Statement of evidence relative to this corner location on sheet 2

I hereby certify that this document was prepared by me or under my direct supervision.

Willard Pellinen

Willard Pellinen
McLeod County Surveyor
License No. 9626

Date June 29, 1994.

OFFICE OF THE COUNTY RECORDER
MCLEOD COUNTY, MINNESOTA.

I hereby certify that this document was filed in this office at 9 o'clock A. M. on the 26th day of July, 1994.

CARMEN OSTLIE MULDRE, MCLEOD COUNTY RECORDER

_____, County Recorder

By Thyllia Hopkewich, Deputy

Document No. 260930

NORTHEAST _____ corner, Section 27, Township 115 North, Range 29 West

Certificate of Location of Government Corner

September, 1856. Denis L. Langton of the General Land Office established this corner. He set a post, raised a mound of earth, drove a charred stake and planted locust seeds at the corners of the mound.

August 26, 1976. Dickman Knutson, county surveyor, dug for the corner. No old survey information on the corner, but adjoining land owners have accepted the center line intersection of the roads as being the section corner. Knutson dug a hole 12 feet by 12 feet by 6 feet at the intersection but found no evidence of the government corner.

Knutson set a McLeod County cast iron monument at the center line intersection of the roads, roads running north, south, east and west.

March 25, 1994. We found the monument in good condition down 12 inches below the surface of the gravel road and took new reference ties.

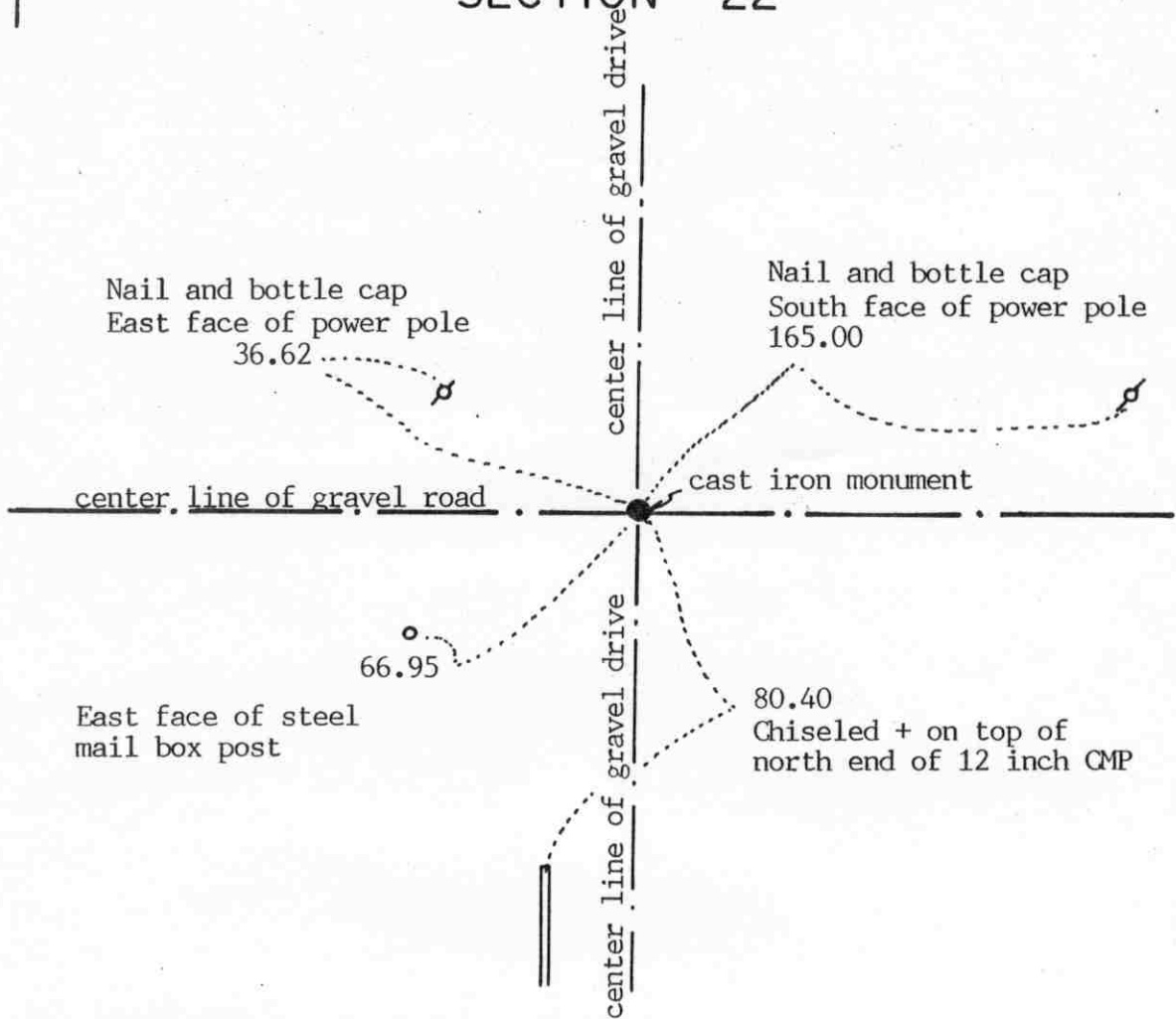
NORTH QUARTER corner, Section 27, Township 115 North, Range 29 West

Certificate of Location of Government Corner

SKETCH OF REFERENCE TIES

(NO SCALE)

SECTION 22



SECTION 27

Statement of evidence relative to this corner location on sheet 2

I hereby certify that this document was prepared by me or under my direct supervision.

Willard Pellinen

Willard Pellinen
McLeod County Surveyor
License No. 9626

Date July 19, 1994

OFFICE OF THE COUNTY RECORDER
MCLEOD COUNTY, MINNESOTA.

I hereby certify that this document was filed in this office at 9 o'clock A.M. on the 16th day of August, 1994.

Carmen Estlin Mulder, County Recorder

By _____, Deputy

Document No. 261296

NORTH QUARTER corner, Section 27, Township 115 North, Range 29 West

Certificate of Location of Government Corner

September, 1856. Denis L. Langton of the General Land Office set a post, raised mound of earth, drove charred stake and planted locust seeds at the corners of the mound.

1914. Road plans by I. C. Christlieb show a stone at the corner.

Ron Somerdorf, in the Northwest Quarter of Section 27 also said there is a stone at the corner. He said he thought it was on the center line of the east-west road, and east of the center line running south.

August 27, 1976. Dickman Knutson, county surveyor, dug for the corner, John Tupa from Hutchinson with a backhoe. They dug a hole 5 feet wide along the center line, starting at a point east of the road running south, and going westerly along the center line of the east-west road to the center line intersection with the road to the south. They found a stone, sharp point up, near the center line intersection of the roads. They took reference ties. This is within a few feet of being half way between the section corners.

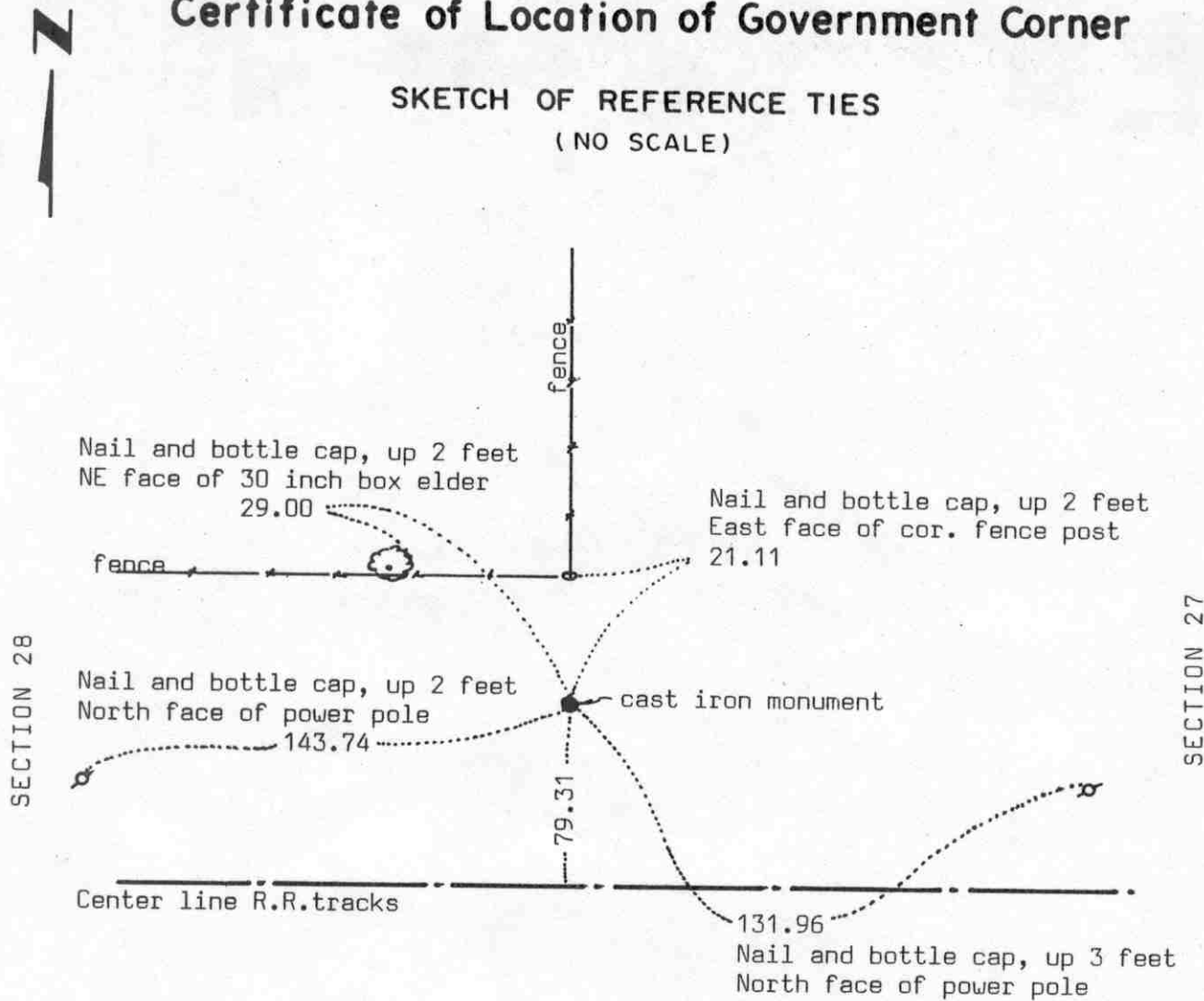
February 16, 1977. Knutson set a spike at the corner and took additional reference ties.

April 6, 1978. Knutson set a McLeod County cast iron monument at the corner.

March 28, 1994. We found the monument in good condition down 4 inches below the surface of the gravel road and took new reference ties.

Certificate of Location of Government Corner

SKETCH OF REFERENCE TIES (NO SCALE)



SECTION 28

SECTION 27

Statement of evidence relative to this corner location on sheet 2

I hereby certify that this document was prepared by me or under my direct supervision.

Willard Pellinen
Willard Pellinen
McLeod County Surveyor
License No. 9626

Date July 10, 1990

OFFICE OF THE COUNTY RECORDER
MCLEOD COUNTY, MINNESOTA.

I hereby certify that this document was filed in this office at 9 o'clock A.M. on the 19th day of July, 1990.

Carmen Belie, County Recorder

By _____, Deputy

Document No. 234492

Certificate of Location of Government Corner

September, 1856. Denis Langton of the General Land Office originally set this corner. He set a post, raised mound of earth, drove charred stake and planted locust seeds at the corners of the mound.

Railroad right of way plans show this corner to be north of the railroad. No distance shown but scales about 50 feet.

July 28, 1980. We went out with Ron Sommerdorf to look for the corner. Mr. Sommerdorf owns the West Half of the Southwest Quarter of Section 27 and the South Half of the South Half of the Northwest Quarter of Section 27. We found a stone, set on end, with a sharp point up. Stone was sticking up about 2 inches above the ground and was flat, 16 inches long, about 8-10 inches at the bottom. We found a railroad spike on the south side of the stone and another railroad spike below the stone. We took reference ties and dug below the stone but found nothing else.

A field line (1/16 line) $\frac{1}{4}$ mile north falls half way between the found stone and the northeast corner of Section 28. Another field line $\frac{1}{8}$ mile north falls on the north line of the South Half of the South half of the Northwest Quarter of Section 27. A straight line between this stone and the west quarter corner of Section 28 falls very close to a split between the north and south quarter corners of Section 28 as shown in 1898 field notes by E.L.Higgins. who was the county surveyor at that time.

August 31, 1982. We replaced the stone with a McLeod County cast iron monument and buried the stone on the north side of the monument.

We accept the stone as having perpetuated the correct location of the quarter corner.

May 25, 1989. We found the monument in good condition and the reference ties good.

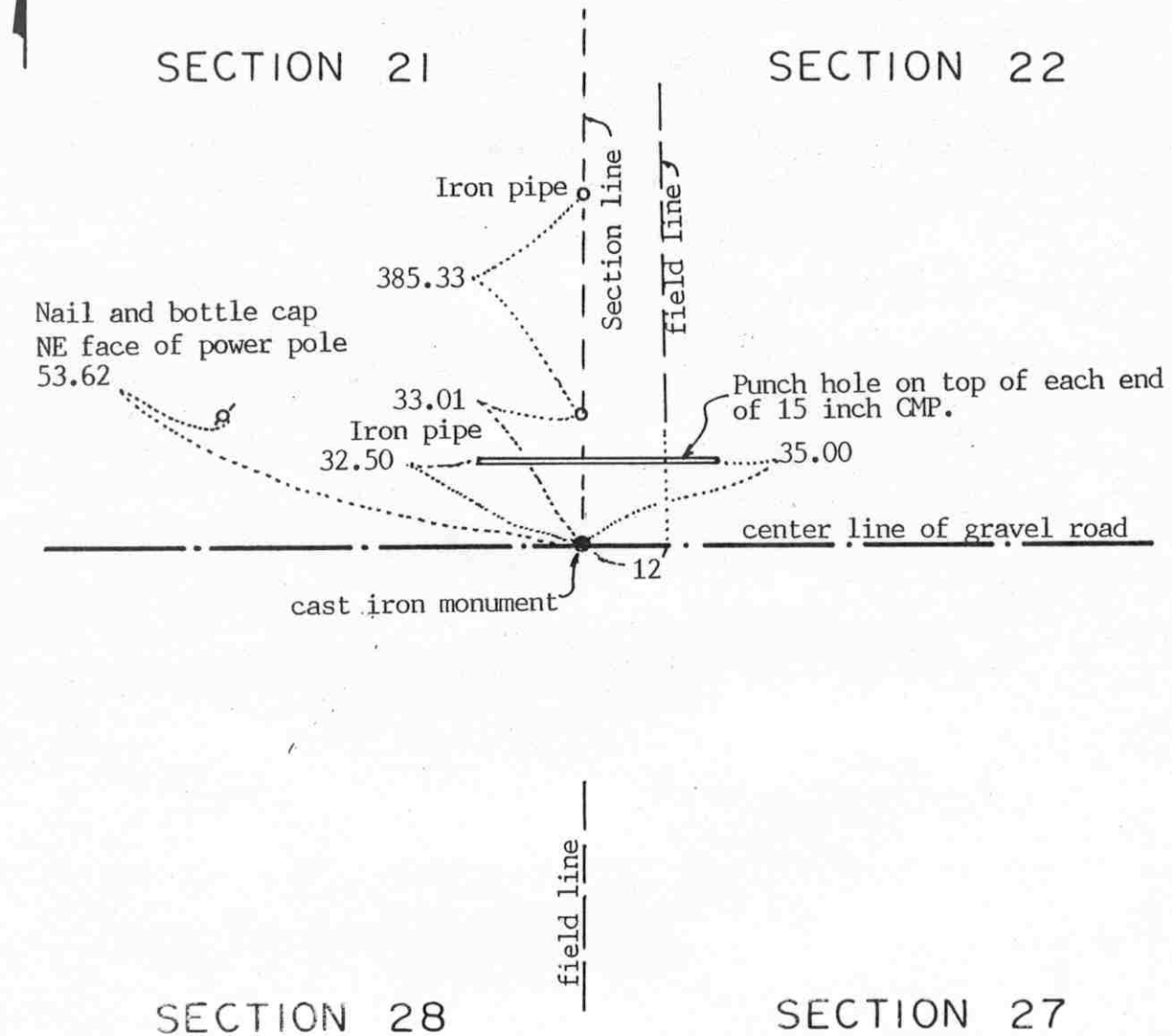
MANEY RECORDS

NORTHEAST corner, Section 28, Township 115 North, Range 29 West

Certificate of Location of Government Corner

SKETCH OF REFERENCE TIES

(NO SCALE)



Statement of evidence relative to this corner location on sheet 2

I hereby certify that this document was prepared by me or under my direct supervision.

Willard Pellinen
Willard Pellinen
McLeod County Surveyor
License No. 9626

Date January 19, 1994.

OFFICE OF THE COUNTY RECORDER
MCLEOD COUNTY, MINNESOTA.

I hereby certify that this document was filed in this office at 9 o'clock A.M. on the 7th day of February, 1994.

Carmen Astlie Mulder, County Recorder

By Jan Petrick, Deputy

Document No. 257718

NORTHEAST corner, Section 28, Township 115 North, Range 29 West

Certificate of Location of Government Corner

September, 1856. Denis L. Langton of the General Land Office established this corner. He set a post, raised a mound of earth, drove a charred stake and planted locust seeds at the corners of the mound.

March 23, 1976. Dickman Knutson, county surveyor, measured the north line of Section 28 and set a temporary northeast corner on the center line of the east-west road in line with field lines north and south.

August 27, 1976. Knutson dug for the corner, John Tupa from Hutchinson with a backhoe. They found a stone on the center line of the road in line with the fence lines. They took available reference ties. A. Peik, 73 years old and had lived in the south half of Section 21 for 50 years old, said this was the corner. Knutson's measured distance to the north quarter corner of Section 28 was within $\frac{1}{2}$ foot of 1898 distance by E. L. Higgins, county surveyor.

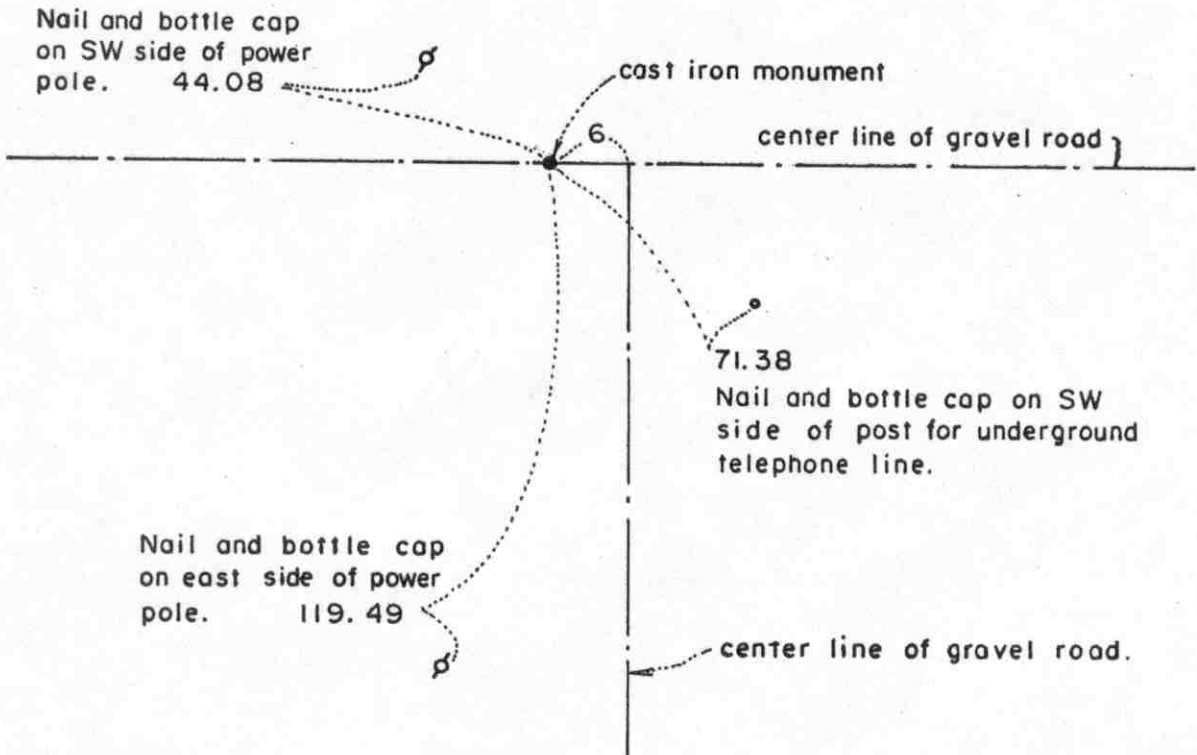
February 16, 1976. Knutson set a spike at the corner and took additional ties.

April 7, 1978. Knutson set a McLeod County cast iron monument.

December 14, 1993. We found the monument in good condition down 6 inches below the surface of the gravel road and took new reference ties. The monument is in the center line of the east west road, in line with a field line to the south. The field line to the north is now 12 feet east of the section line.

Certificate of Location of Government Corner

SKETCH OF REFERENCE TIES
(NO SCALE)



Statement of evidence relative to this corner location on sheet 2

I hereby certify that this document was prepared by me or under my direct supervision.

Willard Pellinen
Willard Pellinen
McLeod County Surveyor
License No. 9626
Date February 9, 1987

OFFICE OF THE COUNTY RECORDER
MCLEOD COUNTY, MINNESOTA.

I hereby certify that this document was filed in this office at 8 o'clock A. M. on the 18th day of October, 1988.

Carmen Potlie, County Recorder
By _____, Deputy

Document No. 225050

Certificate of Location of Government Corner

This corner was established by the Government in 1856 and was monumented by a wood post in a mound of earth.

In 1898 E.L.Higgins surveyed in Section 28 and set an iron post at this corner $\frac{1}{2}$ way between the section corners.

In 1899 E.L.Higgins surveyed in Section 21 and found the iron post he had set in 1898.

In March, 1976, we measured the north line of Section 28 and found an iron pin, 2 inches in diameter, down 1 foot below the road surface. Our distances to the section corners was within $\frac{1}{2}$ foot of the 1898 distances by E.L.Higgins. We took reference ties to the iron pin.

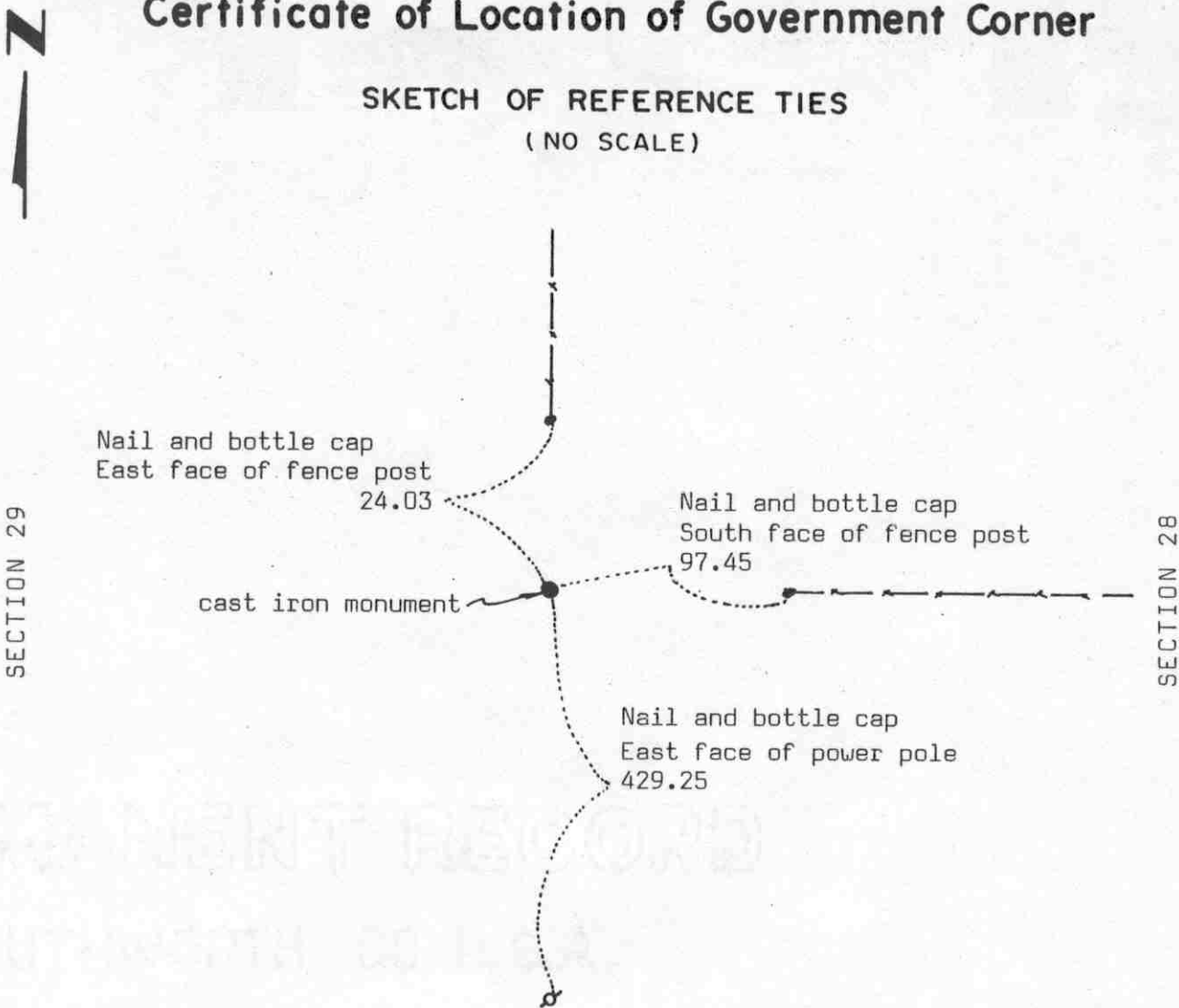
In August 1976 we dug at the corner with a backhoe and at 2 feet below the surface, on the south side of the iron pin, we found a 24 inch by 18 inch stone. We left the stone in place.

In September, 1976 we set a cast iron monument at the location of the iron pin.

EAST QUARTER corner, Section 29, Township 115 North, Range 29 West

Certificate of Location of Government Corner

SKETCH OF REFERENCE TIES (NO SCALE)



Statement of evidence relative to this corner location on sheet 2

I hereby certify that this document was prepared by me or under my direct supervision.

Willard Pellinen
Willard Pellinen
McLeod County Surveyor
License No. 9626

Date July 10, 1990

OFFICE OF THE COUNTY RECORDER
MCLEOD COUNTY, MINNESOTA.

I hereby certify that this document was filed in this office at 9 o'clock A.M. on the 19th day of July, 1990.

Carmen Ostlie, County Recorder
By _____, Deputy

Document No. 234493

Certificate of Location of Government Corner

September, 1856. This corner was established by the Government. Dennis L. Langton "set quarter section post, raised mound of earth, drove charred stake and planted locust seeds in corners of mound."

June, 1975. Ken Todnem, 54 years old, has lived in the Southwest Quarter of Section 20 since 195. and has owned land in the Northeast Quarter of Section 29 since 1959, stated fence intersection is the quarter corner, has been accepted by adjoining land owners as the corner.

April 17, 1978. McCombs Knutson Associates (Dickman Knutson, county surveyor) found a stone, 18 inches by 30 inches down 1 foot below the ground surface. They moved stone east and set a McLeod County cast iron monument at the corner and took reference ties.

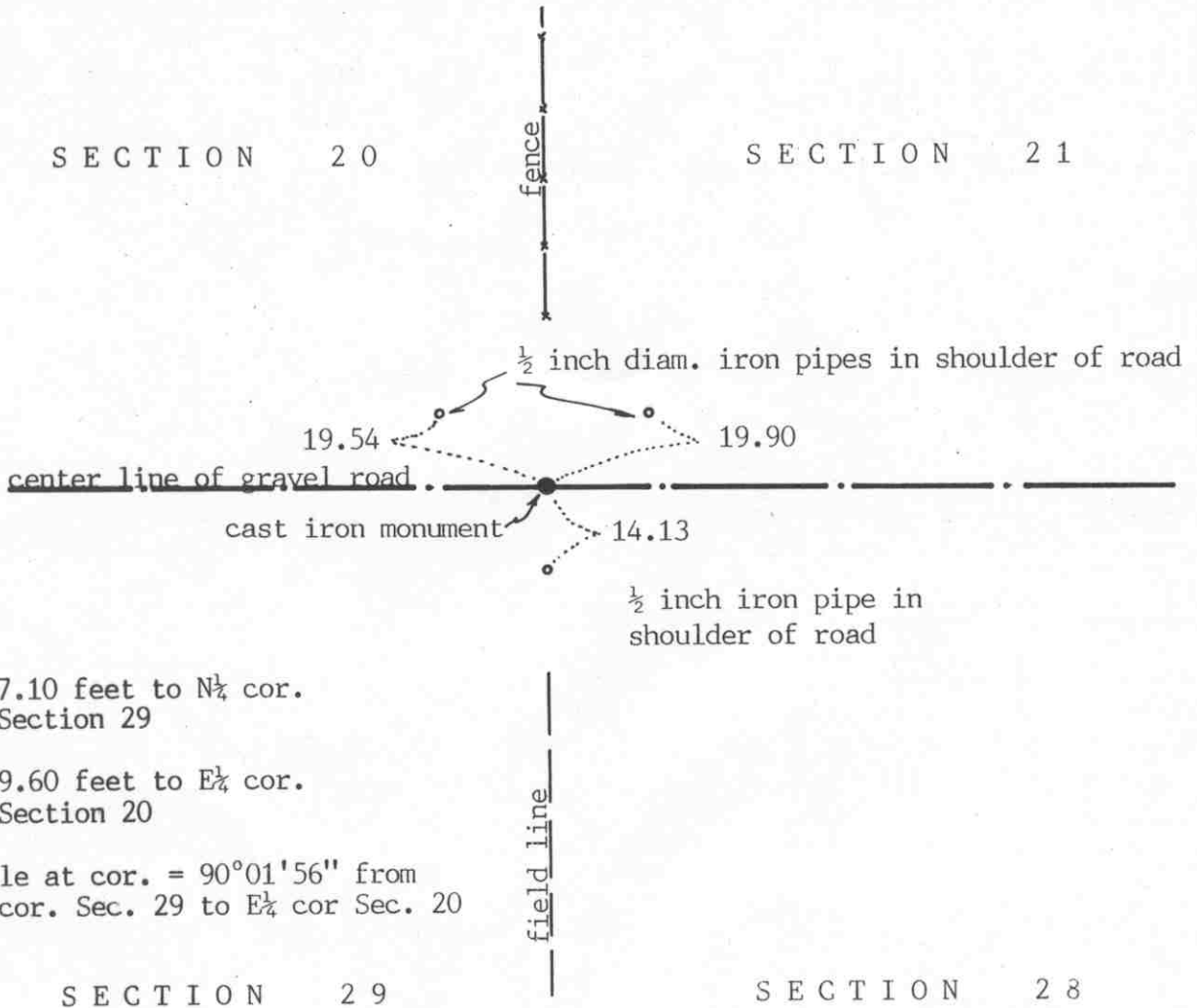
May 25, 1989. We found the monument in good condition and the reference ties good.

We accept the stone found by Knutson as having perpetuated the correct location of the quarter corner.

Certificate of Location of Government Corner



SKETCH OF REFERENCE TIES
(NO SCALE)



2647.10 feet to N $\frac{1}{4}$ cor.
of Section 29

2629.60 feet to E $\frac{1}{4}$ cor.
of Section 20

Angle at cor. = 90°01'56" from
N $\frac{1}{4}$ cor. Sec. 29 to E $\frac{1}{4}$ cor. Sec. 20

Statement of evidence relative to this corner location on sheet 2

I hereby certify that this document was prepared by me or under my direct supervision.

Willard Pellinen
Willard Pellinen
McLeod County Surveyor
License No. 9626

Date January 26, 1992

OFFICE OF THE COUNTY RECORDER
MCLEOD COUNTY, MINNESOTA.

I hereby certify that this document was filed in this office at 9 o'clock A.M. on the 30th day of January, 1992.

Carmen Ostlie, County Recorder
By _____, Deputy

Document No. 243114

NORTHEAST corner, Section 29, Township 115 North, Range 29 West

Certificate of Location of Government Corner

September, 1856. Denis Langton of the General Land Office set a post, raised mound of earth, drove charred stake and planted locust seeds at the corners of the mound.

November, 1898. E.L.Higgins, county surveyor, found a stone at the corner.

1914. I.C.Christlieb, surveyor, set an iron post beside the stone.

January 13, 1976. William Lindeman, 51 years old and had lived in the Northwest Quarter of Section 28 all his life, said the corner is in the center of the east-west road in line with the fence to the north and the field line to the south.

August 27, 1976. McCombs Knutson Associates (Dickman Knutson, county surveyor) dug for the corner in the center line of the road in line with the fence to the north and field line to the south. They found a stone, 16 inches by 16 inches down 18 inches below the surface of the road. They found a 1 3/4 inch by 1 inch steel bar, 1 foot 8 inches long along the west side to the stone. They took reference ties to the stone, left it in place and pulled out the steel bar.

September 27, 1976. Knutson set a McLeod County cast iron monument over the found stone and took additional ties.

This stone is within 1 foot of 1898 distance by Higgins to the north quarter corner of Section 28.

April 12, 1991. We found all the reference ties had been destroyed. We found the monument in good condition down 18 inches below the surface of the road. We took now available ties and set a 1/2 inch diameter iron pipe over the monument.

We accept the monument set by Knutson as marking the correct position of the section corner. It was set over the old monument, the stone, which has perpetuated the location of of the section corner.

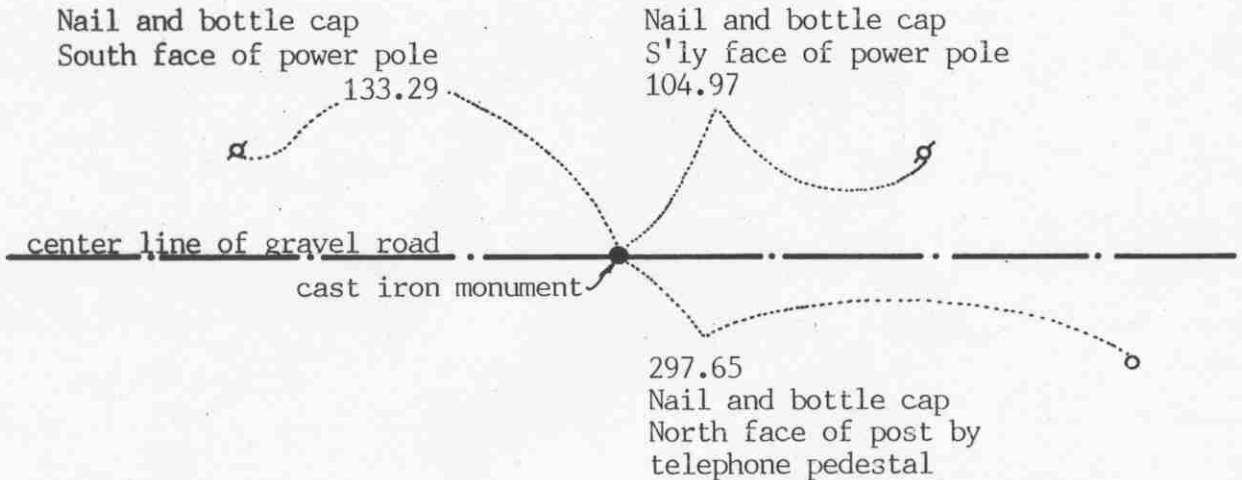
NORTH QUARTER corner, Section 29, Township 115 North, Range 29 West

Certificate of Location of Government Corner



SKETCH OF REFERENCE TIES (NO SCALE)

SECTION 20



SECTION 29

Statement of evidence relative to this corner location on sheet 2

I hereby certify that this document was prepared by me or under my direct supervision.

Willard Pellinen

Willard Pellinen
McLeod County Surveyor
License No. 9626

Date January 26, 1992

OFFICE OF THE COUNTY RECORDER MCLEOD COUNTY, MINNESOTA.

I hereby certify that this document was filed in this office at 9 o'clock A.M. on the 30th day of January, 1992.

Carmen Ostlie, County Recorder

By _____, Deputy

Document No. 243115

Certificate of Location of Government Corner

September, 1856. Denis Langton of the General Land Office set a post, raised mound of earth, drove charred stake and planted locust seeds at the corners of the mound.

1915. Road survey by I.C.Christlieb, surveyor, shows a stone at the corner.

January 13, 1976. Curtis Tongen, 48 years old, and has owned farm in the Northwest Quarter of Section 29 since 1956, said the center line of the east-west road in line with a field line to the south is the corner. William Lindeman, 51 years old, has lived in the Northwest Quarter of Section 28 all his life, agrees with Mr. Tongen.

August 27, 1976. McCombs Knutson Associates (Dickman Knutson, county surveyor) dug for the corner, John Tupa from Hutchinson with a backhoe. Down 4 feet they found a stone with a rotted wood stake beside it. They took reference ties.

October 28, 1977. Knutson set a McLeod County cast iron monument at the corner.

This corner is 2.75 feet west of a split between the section corners and about $19\frac{1}{2}$ feet south of a straight line between the section corners.

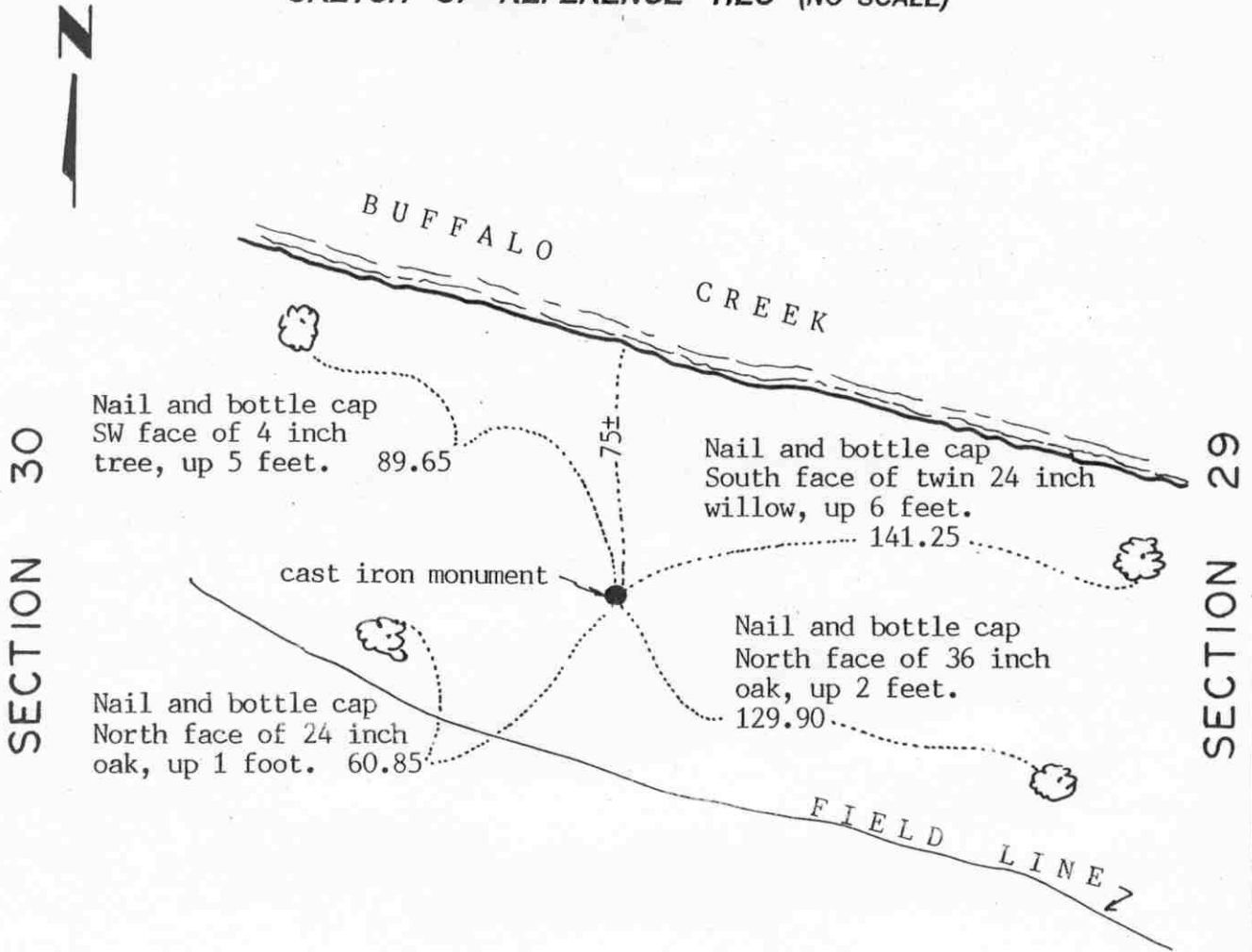
April 12, 1991. We found the cast iron monument in good condition and checked the reference ties.

We accept the stone found by Knutson and the monument set by Knutson as having perpetuated the correct location of the quarter corner.

Certificate of Location of Government Corner

EAST QUARTER corner, Section 30, Township 115 North, Range 29 West

SKETCH OF REFERENCE TIES (NO SCALE)



Statement of evidence relative to this corner location on sheet 2

I hereby certify that this document was prepared by me or under my direct supervision.

Willard Pellinen
 Willard Pellinen
 McLeod County Surveyor
 License No. 9626.

Date Aug. 3, 1994

**OFFICE OF THE COUNTY RECORDER
 MCLEOD COUNTY, MINNESOTA**

I hereby certify that this document was filed in this office at 9 o'clock A. M. on the 16th day of August 19 94.

Carmen St. Louis Mulder, County Recorder

By _____, Deputy.

Document No. 261297

Certificate of Location of Government Corner

EAST QUARTER corner, Section 30, Township 115 North, Range 29 West

September, 1856. Denis L. Langton of the General Land Office set a post and marked a 10 inch and a 12 inch oak for bearing trees.

No occupation lines to help establish this corner.

February 25, 1977. Dickman Knutson, county surveyor, set a $\frac{1}{2}$ inch diameter iron pipe on the northerly extension of found monumentation of the plat of Brownton and half way between the northeast and southeast corners of Section 30. This point is 8.75 feet east of a straight line between the section corners.

April 17, 1978. We replaced the iron pipe with a McLeod County cast iron monument and took available reference ties.

March 27, 1994. We found the monument in good condition down 10 inches below the surface. All old ties were gone and we took new available ties.

This location is accepted as marking the correct location of the quarter corner. It fits the monumentation in the Town of Brownton and is within 8.75 feet of a lost position for the corner.

CERTIFICATE OF LOCATION OF GOVERNMENT CORNER

Northeast Corner of Section 30, Township 115 N., Range 29 W., 5th P.M.

STATE OF MINNESOTA, County of McLeod

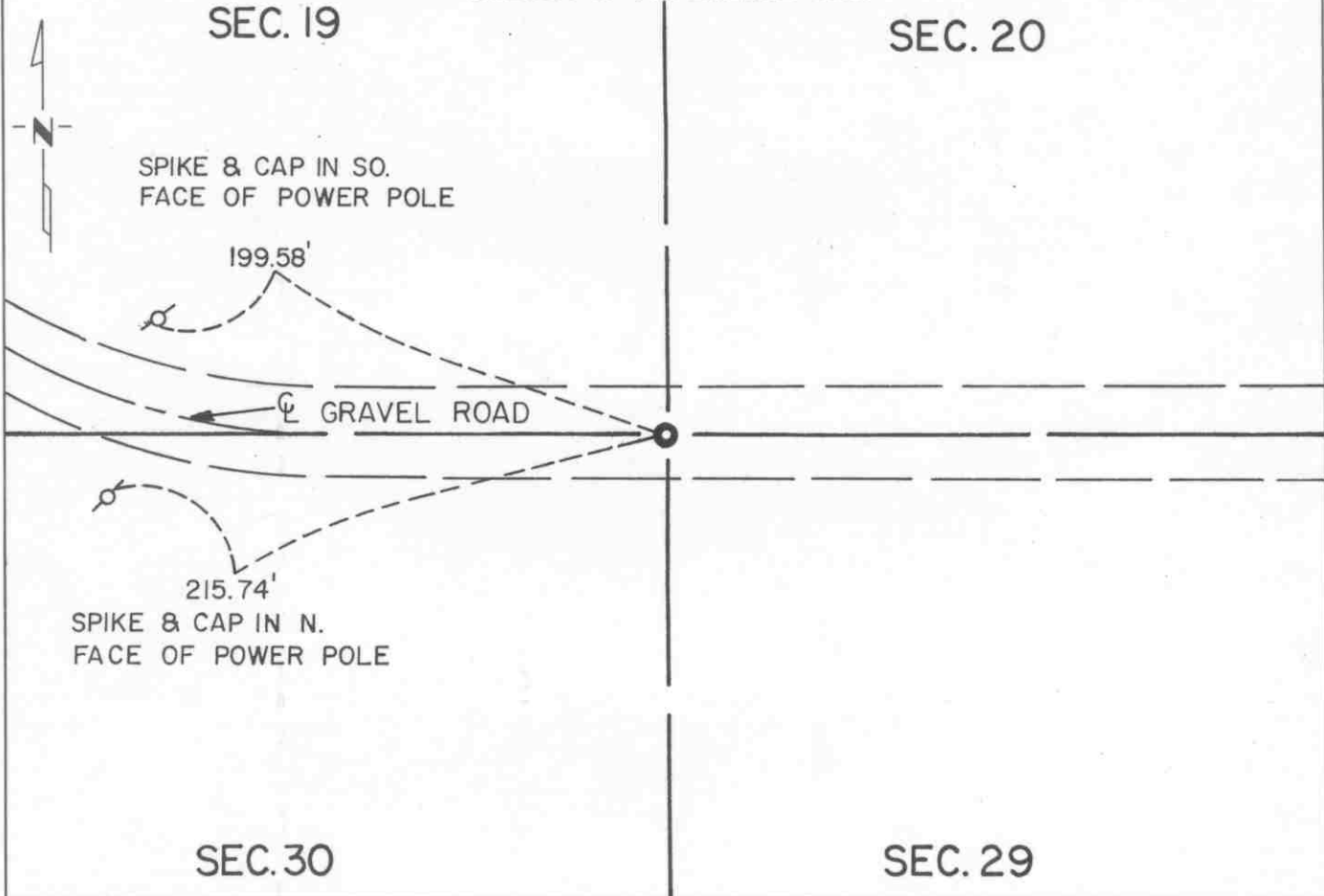
At the corner location shown on the sketch:

On Apr. 16, 1990 found a cast iron monument about 2" below road surface

left monument as found, lowered monument, removed monument (explain)

On _____ placed a _____

SKETCH OF REFERENCE TIES



Statement of evidence relative to this corner location is on back of page.

I hereby certify that this document and the data contained herein was prepared by me or under my direct supervision.

Robert G. Jones 8-19-91
SIGNATURE DATE

Registration No. 11864
 Land Surveyor, Professional Engineer
 County Surveyor, County Engineer

OFFICE OF THE COUNTY RECORDER
 County of McLeod

I hereby certify that this document was filed in the Co. Recorders office at 2 P. .M. on the 18th day of Apr A.D., 1991

County Recorder Carmen Ostlie
 By _____, Deputy

DOCUMENT NO. 241009

Statement of Evidence:

Northeast Corner Section 30, T 115 N, R 29 W

- 1856 - The original Public Land Survey was completed by Denis S. Langton. A wood post was set over a charred stake in a dirt mound to mark the corner. Locust seeds were planted at the corners of the mound.
- 1976 - Dickman Knutson, McLeod County Surveyor, found a stone 2 feet below the road surface with a short wood stake below it. These were located at the centerline of an east/west road, about 1320 feet west of the north/south county road, and 2639.4 feet west of the north quarter corner of Section 29-115-29. A cast iron monument was set above the stone.
- 1984 - Willard Pellinen, McLeod County Surveyor, recovered the cast iron monument and set additional reference ties.
- 1990 - R. C. Jones, Registered Land Surveyor with Mn/DOT, found the cast iron monument about 2" below the road surface.

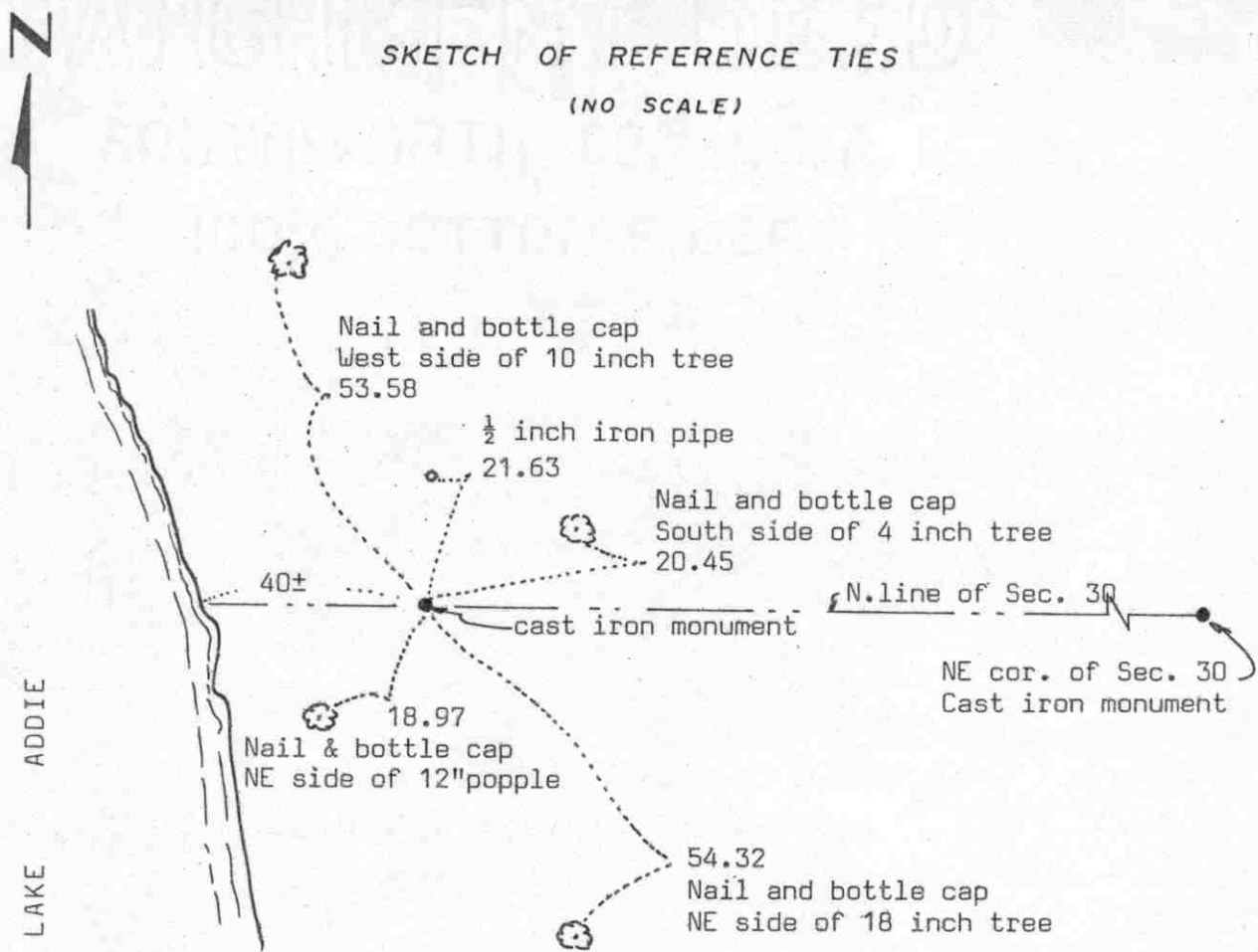
The monument is accepted as the corner position. It fits a long standing occupation line, the centerline of an east/west road. It is located at distances from another monument and an occupation line that one would expect in a normal section subdivision.

For additional information, contact the Mn/DOT Surveys Section in Willmar, Mn 56201.

Certificate of Location of Government Corner

SKETCH OF REFERENCE TIES

(NO SCALE)



Statement of evidence relative to this corner location on sheet 2

I hereby certify that this document was prepared by me or under my direct supervision.

Willard Pellinen

Willard Pellinen
McLeod County Surveyor
License No. 9626

Date 4/9/89

OFFICE OF THE COUNTY RECORDER
MCLEOD COUNTY, MINNESOTA.

I hereby certify that this document was filed in this office at 4 o'clock P.M. on the 20th day of April, 1989.

Carmen Ostlie, County Recorder

By _____, Deputy

Document No. 227820

WITNESS _____ corner, Section 30, Township 115 North, Range 29 West

Certificate of Location of Government Corner

January 6, 1984. We measured the north line of Section 30, T. 115 N., R. 29 W. We measured 5155.61 feet between the northeast and northwest corners of Section 30.

On January 10, 1984, we set a witness corner on a straight line between the section corners on the east side of Lake Addie. This iron pipe was set 50.49 feet of the computed location of Meander corner No. 13.

On July 10, 1985, we replaced the iron pipe with a cast iron monument.

Total distance between section corners = 5155.61 feet.
NE cor. of section to computed location of Meander Corner NO. 13 = 1845.92 feet. Witness corner was set 50.49 feet west of computed Meander Corner No. 13.

CERTIFICATE OF LOCATION OF GOVERNMENT CORNER

Witness corner to Meander

Corner No. 16 ~~XXXXX~~ of Section 30, Township 115 N, Range 29 W, 5th P.M.

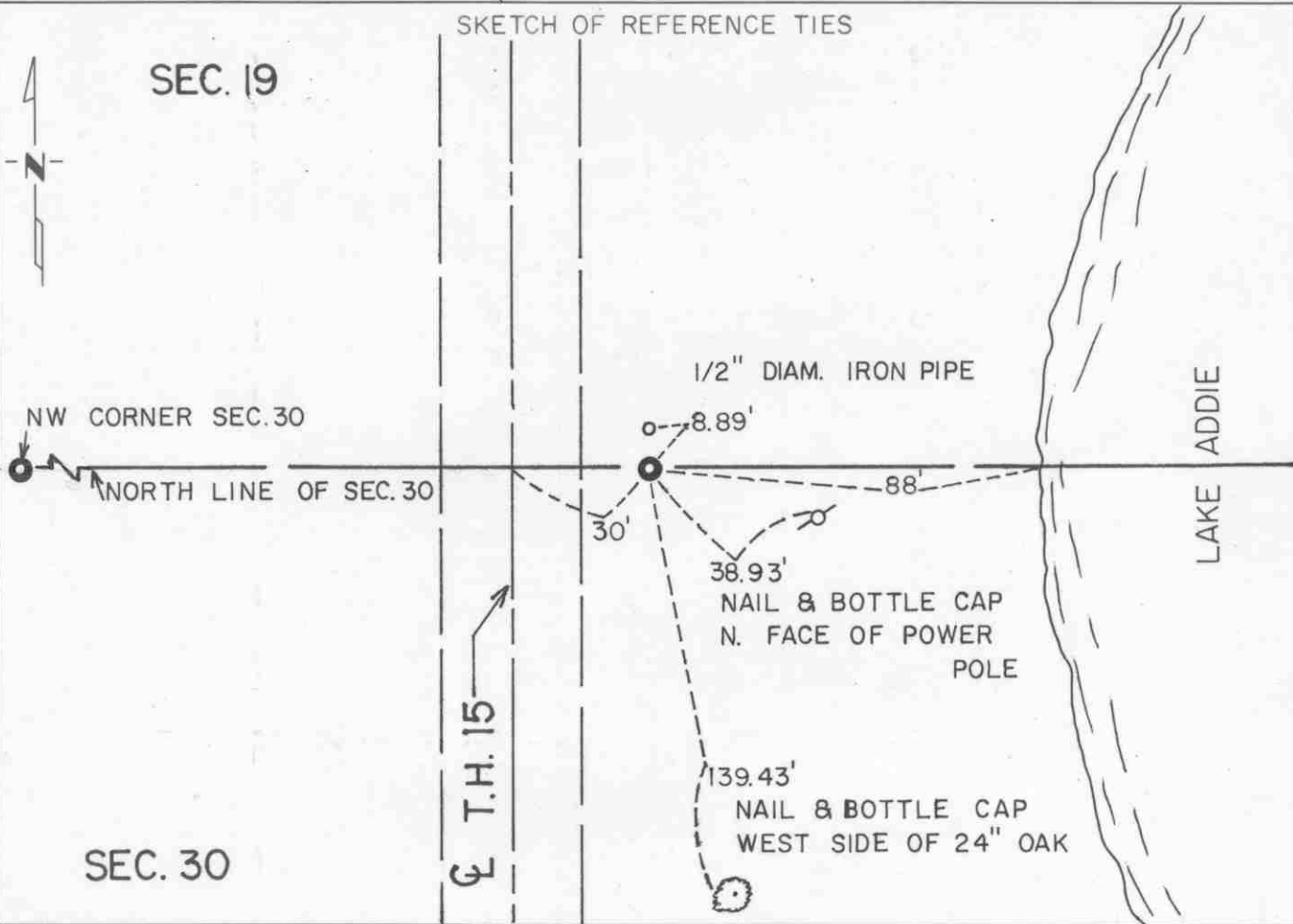
STATE OF MINNESOTA, County of McLeod

At the corner location shown on the sketch:

On Apr. 16, 1990 found a cast iron monument about 3" below the ground - in the shoulder slope of T.H. 15

left monument as found, lowered monument, removed monument (explain)

On _____ placed a _____



Statement of evidence relative to this corner location is on back of page.

I hereby certify that this document and the data contained herein was prepared by me or under my direct supervision.

Robert G. Jans
SIGNATURE

8-19-91
DATE

Registration No. 11864

Land Surveyor, Professional Engineer

County Surveyor, County Engineer

OFFICE OF THE COUNTY RECORDER

County of McLeod

I hereby certify that this document was filed in the Co. Recorders office at 2 P .M. on the 18th day of sep A.D., 1991

County Recorder Carmen Ostlie

By _____, Deputy

DOCUMENT NO. 241011

Statement of Evidence:

Witness Corner to Meander Corner No. 16
on the North Line of Section 30, T 115 N, R 29 W

- 1855 - The original Public Land Survey was completed by Thomas Simpson. A wood post was set in a dirt mound to mark the meander corner. A pit was dug 10 links to the west of the mound.
- 1941 - The Minnesota Highway Department right of way map does not make any reference to this corner.
- 1984 - Willard Pellinen, McLeod County Surveyor, measured the north line of Section 30 and computed the position of the meander corner by single proportionate measure of the the original Public Land Survey distance between the northwest and northeast corners of the section. An iron pipe was set 81.74 feet west of the meander corner position to serve as a witness corner.
- 1985 - Willard Pellinen replaced the iron pipe with a McLeod County cast iron monument and set reference ties.
- 1989 - Willard Pellinen recovered the cast iron monument and all the reference ties.
- 1990 - R. C. Jones, Registered Land Surveyor with Mn/DOT, found the cast iron monument about 3" below the ground. It is located about 30 feet east of the centerline of T.H. 15 in the shoulder slope of the highway.

The cast iron monument at the witness corner to the meander corner is on the line between the northwest and northeast corners of Section 30.

For additional information, contact the Mn/DOT Surveys Section at Willmar, Mn 56201.

CERTIFICATE OF LOCATION OF GOVERNMENT CORNER

Northeast Corner of Section 25, Township 115 N, Range 30 W, 5th P.M.

STATE OF MINNESOTA, County of McLeod

At the corner location shown on the sketch:

On Apr. 16, 1990 found a cast iron monument about 4" below the road surface
and set a P.K. nail over it at the surface

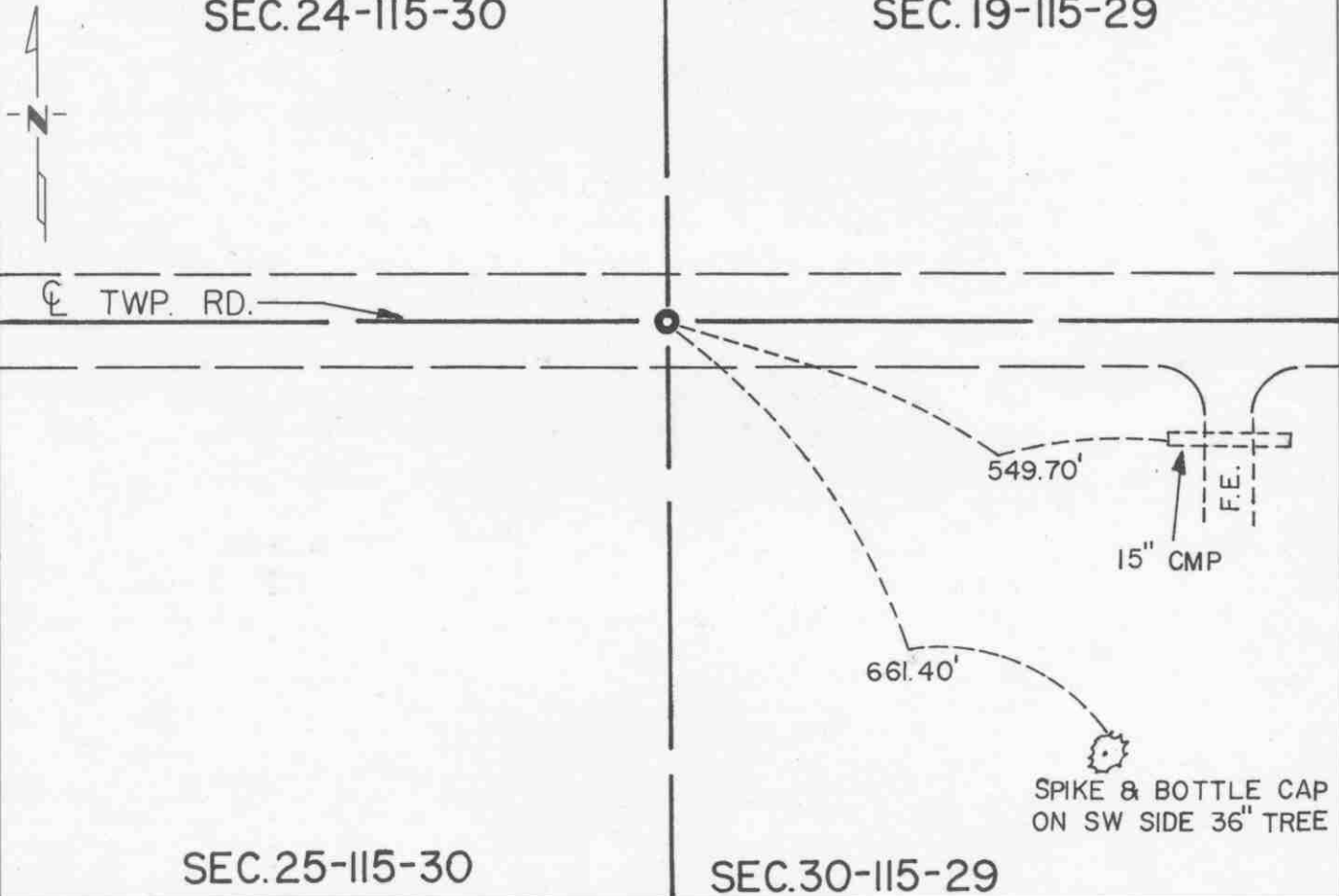
left monument as found, lowered monument, removed monument (explain)

On _____ placed a _____

SKETCH OF REFERENCE TIES

SEC. 24-115-30

SEC. 19-115-29



Statement of evidence relative to this corner location is on back of page.

I hereby certify that this document and the data contained herein was prepared by me or under my direct supervision.

Robert Gans
SIGNATURE

8-19-91
DATE

Registration No. 11864

- Land Surveyor, Professional Engineer
- County Surveyor, County Engineer

OFFICE OF THE COUNTY RECORDER

County of McLeod

I hereby certify that this document was filed in the Co. Recorders office at 2 P .M. on the 18th day of Sep A.D. 1991

County Recorder Carmen Dettie

By _____, Deputy

DOCUMENT NO. 241033

Statement of Evidence:

Northeast Corner Section 25, T 115 N, R 30 W

- 1855 - The original Public Land Survey of the township line was completed by John Ryan. A wood post was set over a deposit of charcoal in a dirt mound. Trenches and pits were dug to build the mound. Osage orange was planted at the corners of the mound.
- 1896 - I. C. Christlieb, McLeod County Surveyor, set an iron monument to mark the corner. His survey showed that the distances to the quarter section corners to the north and south of this corner were both 2657 feet.
- 1941 - The Minnesota Highway Department right of way map depicts the corner to be about 1550 feet westerly of T.H. 15 P.O.S.T. 755+87.0 as scaled on the map.
- 1970 - Dickman Knutson, McLeod County Surveyor, set a cast iron monument by single proportionate measure of Christlieb's survey.
- 1990 - R. C. Jones, Registered Land Surveyor with Mn/DOT, recovered the cast iron monument about 4" below the road surface.

The cast iron monument is accepted as the corner location because it fits Christlieb's survey distances within 1.5 feet, it is on the centerline of an east/west road, and it is 1558.98 feet westerly of T.H. 15 P.O.S.T. 755+87.0, which substantially fits the position shown on the right of way map.

For additional information, contact the Mn/DOT Surveys Section at Willmar, Mn 56201.

EAST QUARTER corner, Section 25, Township 115 North, Range 30 West

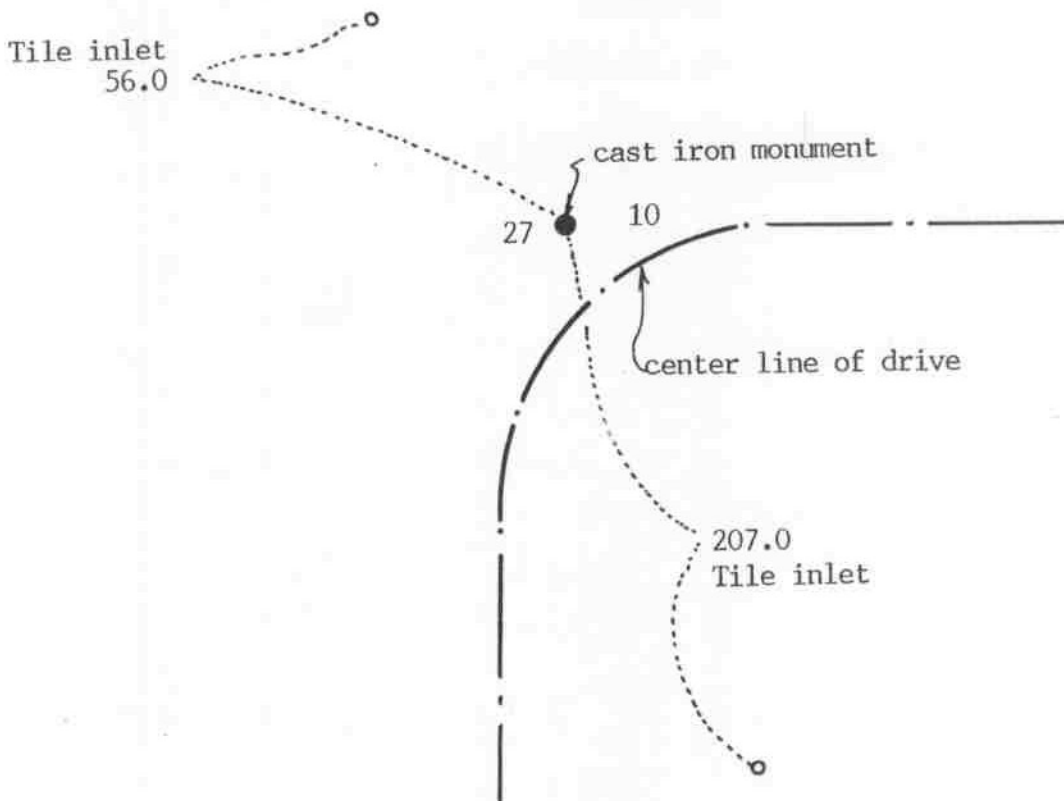
Certificate of Location of Government Corner

SKETCH OF REFERENCE TIES
(NO SCALE)



SECTION 25 T. 115 R. 30

SECTION 30, T. 115 R. 29



Statement of evidence relative to this corner location on sheet 2

I hereby certify that this document was prepared by me or under my direct supervision.

Willard Pellinen

Willard Pellinen
McLeod County Surveyor
License No. 9626

Date July 18, 1994.

OFFICE OF THE COUNTY RECORDER
MCLEOD COUNTY, MINNESOTA.

I hereby certify that this document was filed in this office at 9 o'clock A. M. on the 26th day of July, 1994.

GARMEN OSTLIE MILDRE, MCLEOD COUNTY RECORDER, County Recorder

By Phyllis Sopkowiak, Deputy

Document No. 260932

EAST QUARTER corner, Section 25, Township 115 North, Range 30 West

Certificate of Location of Government Corner

July, 1855. John Ryan of the General Land Office first established this corner. He set a post, deposited charcoal, dug pits and trench, built mound of earth and planted osage orange seeds at the corners of the mound.

1896. I. C. Christlieb set an iron monument at the corner.

1969. Dickman Knutson, county surveyor, measured the east line of Section 25.

1970. Knutson set a McLeod County cast iron monument at a proration of Christlieb's measurements along the east line of Section 25.

April 1, 1994. We found the monument in good condition and checked the reference ties.